

## ENGLISH

- 5 passages, 15 questions each
- ~50% of questions test **grammatical rules**

## READING

- 4 passages, 10 questions each
- ~50% of questions ask for **specific details, key ideas**



# ACT

# SAT

achieve  
more

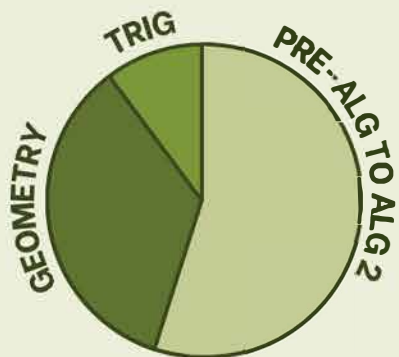
## READING AND WRITING



- Each question has its **own passage** of 25-150 words
  - ~20% of questions test **vocabulary**

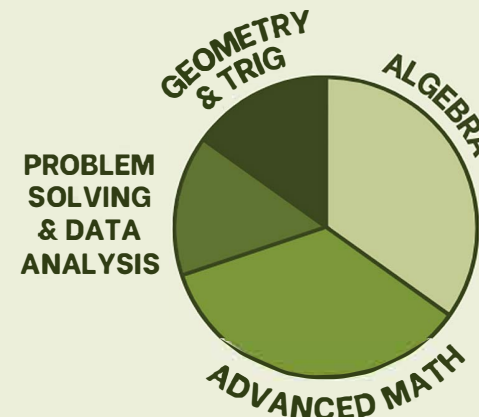
## MATH

- **Multiple choice** questions only
- Calculator allowed: **TI-84 Plus CE** recommended!
- *No formula sheet provided*



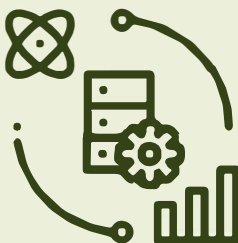
## MATH

- ~25% are **grid-in** questions
- **Built-in Desmos** graphing calculator (or bring your own)
- *Formula sheet provided*



## SCIENCE

- Data interpretation and passage analysis in scientific contexts
- 90% of questions do **not** require outside knowledge



## DATA ANALYSIS

- Graphs and tables **embedded** in each RW and Moth module
- 100% of questions do **not** require outside knowledge

